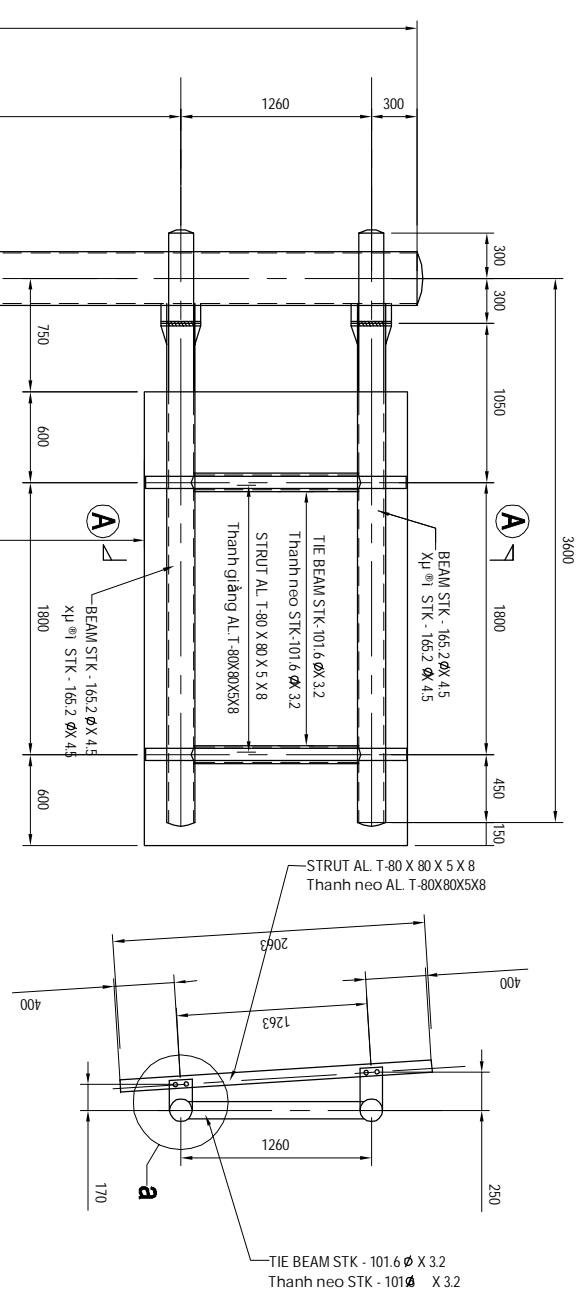
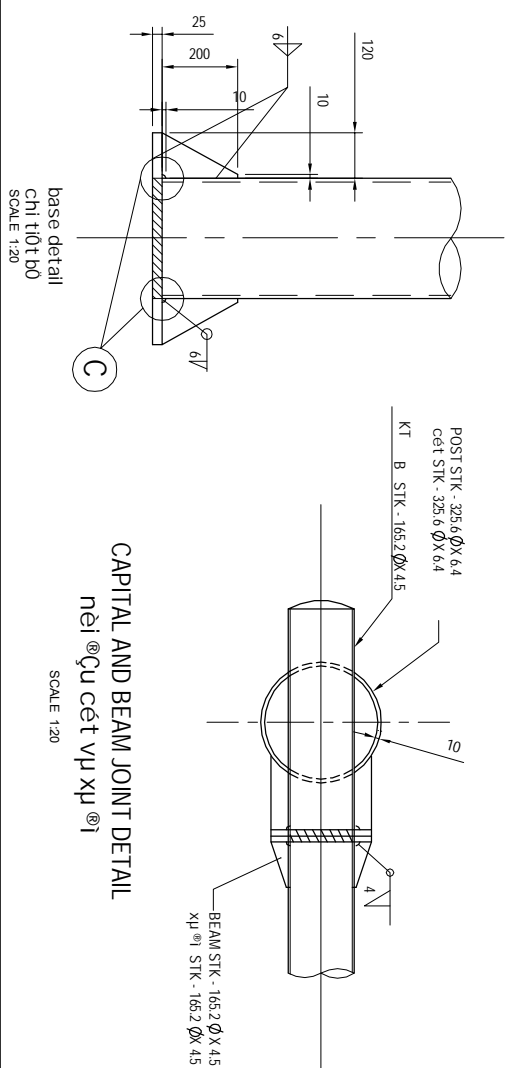
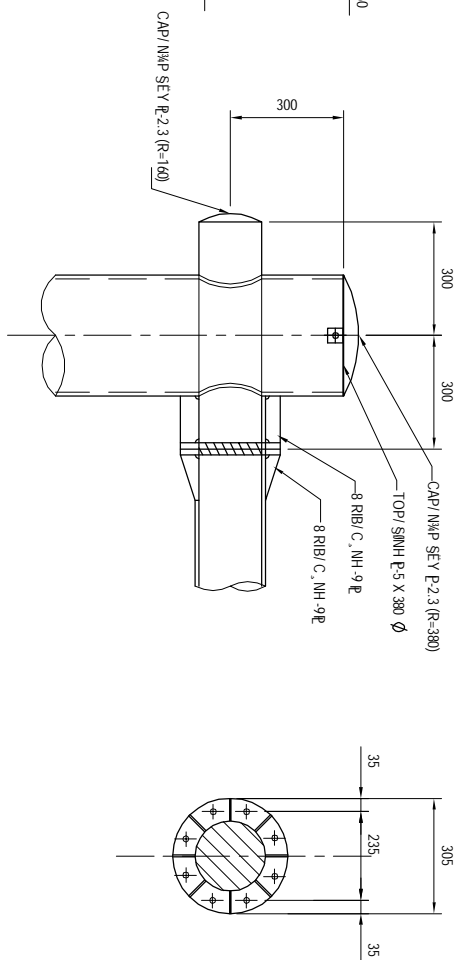
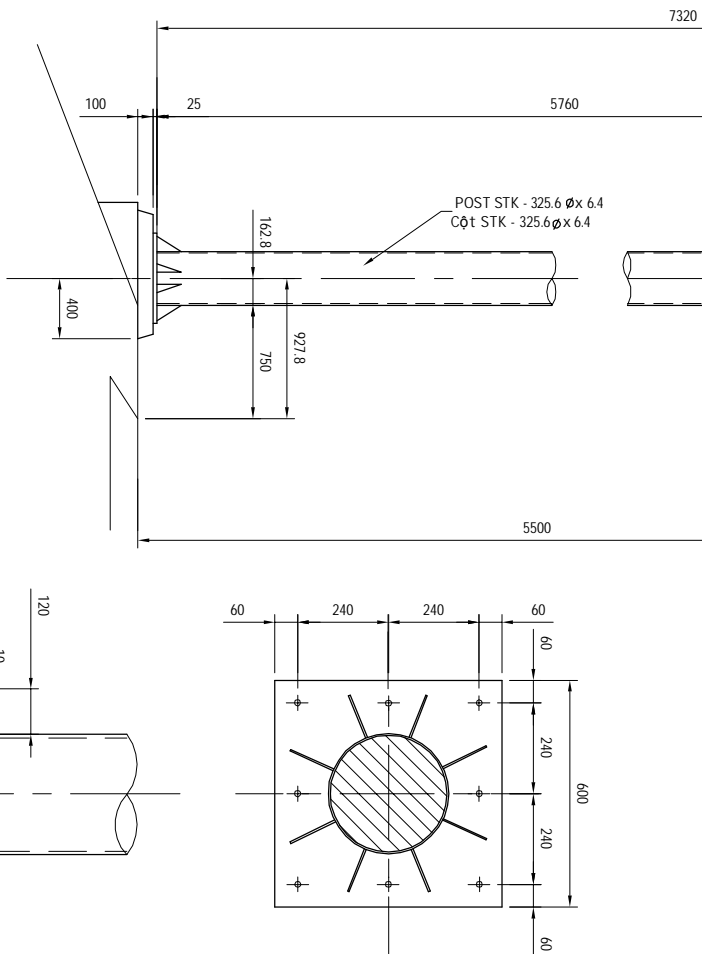
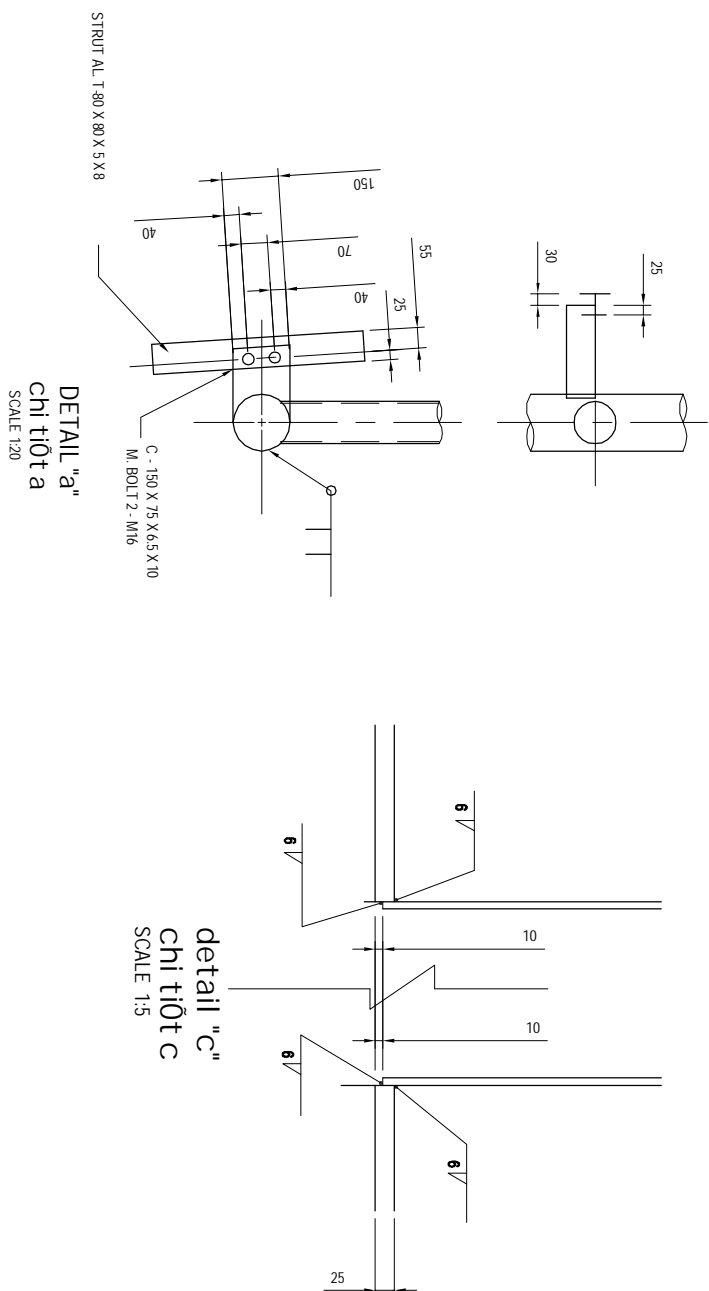


## STRUCTURE FOR GUIDE SIGN - GANTRY POST CẦU TÀO CỘT BIỂN BẢO - GIÁ TAY VƯỜN

SECTION a-a  
mEt c<sup>3</sup>/<sub>4</sub>t a-a

CAPITAL AND BEAM JOINT DETAIL  
nội<sup>®</sup> Cúc cét vự xự<sup>®</sup> i

NOTE :  
All dimensions are millimeter  
tojn bé k'ich thuf c ghi 14 mm  
ALL STEEL SHALL BE GALVANIZED  
thdp®Uf c m<sup>1</sup> ki m

BẢNG THÔNG KÊ KHỐI LƯỢNG		
Cấu kiện	đơn vị	khối lượng
Cột	kg	522.49
Giàn	kg	182.00

MINISTRY OF TRANSPORT VIETNAM

ENGINEERING DESIGN CONSULTANT

REMARKS:

DA NANG-QUANG NGAI EXPRESSWAY DEVELOPMENT PROJECT

Package: 14B1 Section: Km065+000 - Km099+500.00

CLIENT	PROJECT MANAGEMENT CONSULTANT	The Joint Venture of Nippon Koei Co., Ltd. Nippon Engineering Consultants Co., Ltd. Chodai Co., Ltd.		
VIETNAMEXRESSWAY CORPORATION	PROJECT MANAGEMENT UNIT NO.85	Thai Engineering Consultants Co., Ltd.		
		<div></div>		
		PREPARED BY	CHECKED BY	APPROVED BY
		NAME	HOANG DUC CHAU	TAKA YASU NGAI
		SIGNATURE		IISHIMOTO
		DATE		
		SCALE	DRAWING NO.	REV. NO.
			PKG14B-14L-MISC-150	2